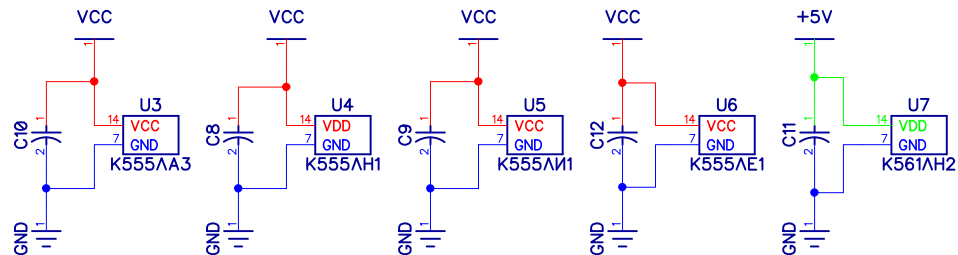


J1.12	MEMR	12
J1.14	MEMW	14
J1.15	RESET	15
J1.25	A8	25
J1.26	A9	26
J1.27	A10	27
J1.28	A11	28
J1.29	A12	29
J1.30	A13	30
J1.31	A14	31
J1.32	A15	32
J1.33	SLTSL	33
J1.34	P34	34
J1.35	+12V	35
J1.36	-12V	36
J1.37	P37	37
J1.38	P38	38



#	Метка	Корпус	Значение
1	B1	101	3.6V
2	C1	CAP-5.08/9.15x3	4700pF
3	C2	CAP-5.08/9.15x3	0,1uF
4	C3	CAP-5.08/9.15x3	27pF
5	C4	CAPPR-2.54/5.08	100uF/16V
6	C5	CAPPR-2.54/5.08	100uF/16V
7	C6	CAP-5.08/9.15x3	0,1uF
8	C7	CAP-5.08/9.15x3	0,1uF
9	C8	CAP-6.35/10.4x3	0,1uF
10	C9	CAP-5.08/9.15x3	0,1uF
11	C10	CAP-5.08/9.15x3	0,1uF
12	C11	CAP-5.08/9.15x3	0,1uF
13	C12	CAP-5.08/9.15x3	0,1uF
14	D1	DO-35	1N5819
15	D2	DO-35	KD522
16	D3	DO-35	1N5819
17	J1	IDC40M_DIP	
18	R1	RES-7.62/4x1.5	20K
19	R2	RES-7.62/4x1.5	1K
20	R3	RES-7.62/4x1.5	2M
21	U1	DIP-16	KP555ИД7
22	U2	DIP-24/600mil	KP512ВИ1
23	U3	DIP-14	K555АА3
24	U4	DIP-14	K555АВ1
25	U5	DIP-14	K555АВ1
26	U6	DIP-14	K555АВ1
27	U7	DIP-14	K561АВ2
28	Y1	BCY-2/D3.1	32768Hz